

THE BAND MEMBERS

Flute

Samantha Limonciello
Kirsti Powell (+ piccolo)
Betsy Savery
Janet Shelley (+ piccolo)
Kaye Wedel
Barbara Bennett

Eb & C Clarinets

Bill Powell (+ bass sax)

Bb Clarinet

Jane Boettger
Shirley Dean
Linda Graham
Patsy Hannebrink
Michael Ireland
Janys Jordan
Joelle Lake
Nancy Laubenheimer
Jan Woldseth (+tenor sax)

Bass Clarinet

Ginger Jackson
Kay McCammond

Baritone Saxophone

Ellen Bell
Julie Gustafson

Alto Clarinet

David Lake

Bassoon

Bruce Piner

Alto Saxophone

Gary Anderson
Morgan Halperin
Carla Nordstrom
Mary Whitmore (+sop sax)

Tenor Saxophone

Ted Lindberg
Tim Proffitt

French Horn

Steve Fernald
Cameron Kopf (+ trumpet)
Liam Powell
Patricia Rosales

Euphonium

Ike Geddings
Tom Larsen
Jerry Wassmund

Electric Bass Guitar

Kyle Hofland

Trumpet/Cornet

Mark Copland
Bruce Heseltine
Karin Hofland
Jim Luckinbill
Ralph Remick
Forrest Schomberg
John Smiley
Brandon Stubbs
Trent Taylor

Trombone

David Bear
Don Daniels
Chris Hofland
Robert Maylum

Tuba

Chuck Cavanaugh
Gary Shannon
Walter Webb

Percussion

John Basa
James Joannesson Kopf
Jean Poff
Kurt Remick

JOIN OUR BAND!

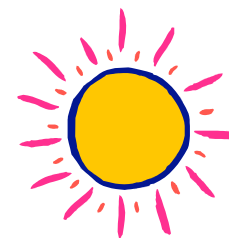
Did you play an instrument in high school or college? Whether you were first chair or a beginner, we always welcome new members. We play ten or more concerts each year, including indoor programs in the winter and spring. Dust off your instrument and join us at our Monday night rehearsals. Sit in with us

one time, and you might be up on stage for the next concert. Most of us have found that you really can come back to music after a long break, and it's just pure fun. Nice people, too!

For additional information, visit our website at www.nccb.org or talk to any band member. Or just drop in! It is common for new members not to play every piece at first. Rehearsals during February-May and October-November are at Nevada Union High School's band room I-3. Rehearsals during June-August are at the bandshell in Nevada City's Pioneer Park.

First Baptist Church, Grass Valley, CA

SPRING into SUMMER

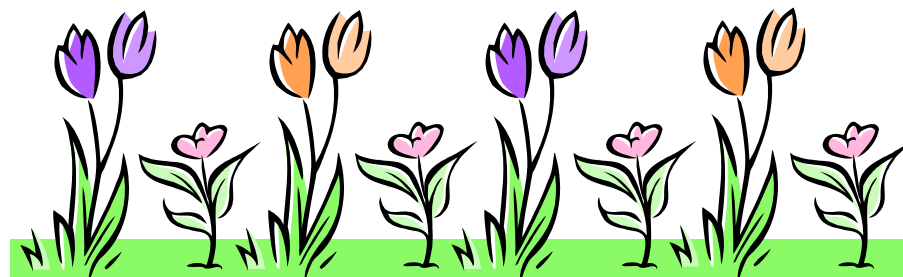


**SUNDAY MAY 5, 2013
AT 3:00PM**

NEVADA COUNTY CONCERT BAND

conducted by Cheryl Woldseth

<http://nccb.org>



CHERYL (SUTTON, BAKER) WOLDSETH, OUR CONDUCTOR, is an accomplished conductor, performer, clinician, and educator. With a B.M. in Church Music from Westminster Choir College (Princeton, NJ), she sings and plays many instruments. She has served several non-profit music organizations, performs and records professionally with the Sonos Handbell Ensemble (www.sonos.org), teaches music privately and at several local K-8 schools, and performs with the Raspberry Jam Band. She is a member of the music fraternity Sigma Alpha Iota, and also owns the music publishing company Bronze:FX (www.bronzefx.com). Cheryl lives in Grass Valley, CA.

GORDON PIPKIN, OUR ANNOUNCER, began as a music educator, then turned to school administration in Hayward. He holds a B.M. degree from University of the Pacific, and a Masters in school administration from Cal State Hayward (East Bay). He currently substitute teaches at Nevada Union High School, and directs the Sierra Pres. Church's handbell choir. Gordon plays trumpet, and is a Nevada County Concert Band member.

SUPPORT FOR THE BAND comes from people like you. The custom of free public concerts dates back to the Gold Rush era, and we are proud to carry on the tradition. Though the concerts are free, it still costs money to run the band. Your contributions allow us to buy music, pay for winter performance facilities, provide website service and printed programs, occasionally add to our instrument collection, and cover the myriad little things that add up to real expenses. Tax-deductible contributions may be sent to our mailing address as well. We appreciate your support.

NEVADA COUNTY CONCERT BAND

P.O. Box 1444, Nevada City, CA 95959
nccband@yahoo.com

www.nccb.org

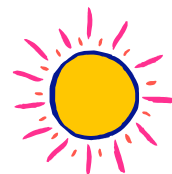


UPCOMING EVENTS FOR 2013

- ☞ "The Sixties" Pioneer Park Picnic Pops #1, Sunday June 23, 5pm
- ☞ Independence Day Parade, Grass Valley, Thursday July 4 at 9am
- ☞ Concert in Graeagle Park (Independence Day), Saturday July 6 at 4pm
- ☞ "California Dreamin'" Pioneer Park Picnic Pops #2, Sunday July 28, 5pm
- ☞ Nevada County Fair's Pine Tree Stage, Saturday August 10 at 3pm
- ☞ "The Heat Is On" Pioneer Park Picnic Pops #3, Sunday August 25, 5pm
- ☞ Labor Day Concert, Lake Wildwood, Sunday September 1 at 5pm
- ☞ Constitution Concert, Nevada City, Saturday September 7 at 5:30pm
- ☞ Washington DC/Gettysburg tour in October (two concerts plus fun)
- ☞ "Holiday Concert" at 1st Baptist GV, Sunday December 8 at 2:30pm

If you would like to receive e-mail notices of our performances, please drop your name and email address in the collection box in the front lobby.

HIGH SCHOOL FINE ARTS CREDIT is available – free – through Nevada Union High School's Adult Education just for playing with the band.



NOTE FROM THE CONDUCTOR: The band purchases new music each season. The asterisk () listed in today's program indicates new music for the 2013 season. Thank you to all who financially support the band!*

TODAY'S PROGRAM

West Side Story* – Selections Leonard Bernstein/W. J. Duthoit
 MEDLEY: I Feel Pretty • Maria • Something's Coming
 • Tonight • One Hand One Heart • Cool • America

High Flight* trumpet section feature Stephen Bulla

My Girl S. Robinson & R. White/Cheryl Woldseth
 Blended Metal Saxophones

Irving Berlin's Songs for America arr. James Swearingen
 MEDLEY: This Is the Army • Mister Jones • Give Me Your Tired, Your Poor
 • This Is a Great Country • God Bless America

Yosemite Autumn* Mark Camphouse

The Liberty Bell March John Philip Sousa

♪ ♪ ♪ INTERMISSION ♪ ♪ ♪

Brass Romance Lady Gaga/Canadian Brass
 brass ensemble plus one

Space and Beyond arr. John Moss
 MEDLEY: Also Sprach Zarathustra (from 2001 A Space Odyssey)
 • Star Trek the Next Generation (theme) • Mars (from The Planets)
 • Star Wars (main theme and end credits)

St. George and the Dragonet Stan Freberg
 a radio show drama

Beatles: Love* arr. Jay Bocook
 MEDLEY: Because • Drive My Car • The Word • What You're Doing
 • Hey Jude • Sgt. Pepper's Lonely Hearts Club Band

Encore: 1915 March B. C. Bridges/Cheryl Woldseth