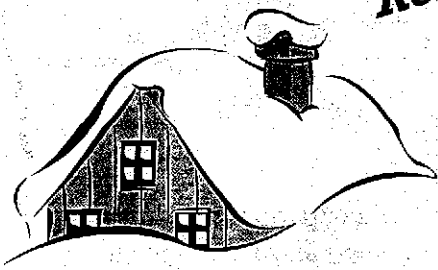


Nevada County Concert Band
PO Box 1444
Nevada City, CA 95959

Rehearsal Info Inside!!

UNITED STATES POSTAGE
178
8770 \$ 00.34⁰ PB8731399
3063 NEVADA CITY, CA OCT 18 01 95959



Grass Valley, CA 95945



Our Conductor Search

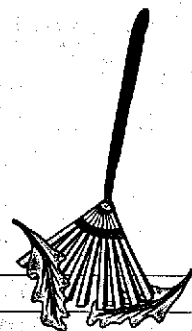
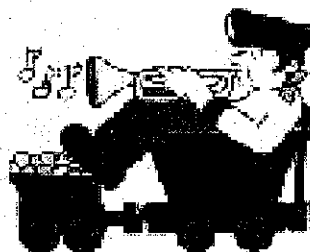
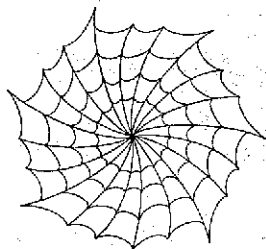
As you may know, Henry Hansen hung up his baton with the Band last June. With multiple offers to fill the job, the Executive Committee has been challenged to select the right Conductor for the Band. Although Henry had sub-contracted the Summer concerts in previous years to others, the ExComm has decided that this approach to Band Leadership is too fragmented and offers disadvantages to performance quality and rehearsal consistency.

The ExComm has received three applicants for the vacancy, all of whom are familiar to the Band. The ExComm also determined that the only way to find out if a conductor was going to be a good fit with the Band was to give them a concert and the preceding rehearsals. In this way, the Band could make an informed judgement about how the conductor interacts, communicates and performs in real live situations. As such, the second half of the summer served as Mike McAllister's audition for this job.

The Holiday Season will serve as Cheryl Baker's opportunity to impress upon the Band how her particular strengths may prove beneficial to the Band. The Spring Season, beginning in March with an indoor concert on a date to be determined, will serve as Patty Carter's audition period (yet another percussionist!). From these three uniquely qualified and uniquely experienced individuals, the Band, through the ExComm, will commit to a long term Conductor.

You're encouraged to form your own positive and negative opinions about any aspect of working with these three individuals. Mike's audition is complete, so the compare and contrast period begins immediately. If you have strong feelings about any of these people as we go through this process, please share them with any of the members of the ExComm. The ExComm is committed to having a single conductor for next summer's POP series.





Holiday Season 2001

Holiday Music Season Starts ——— Oct. 29

Now that the Fall Hiatus has passed, it's time to clean your ax and get ready for the brief, but fun Holiday Season. This year's Holiday Season will begin on October 29, this coming Monday night. The location, as has been the case in the past, is the First Baptist Church on Ridge Road across from Nevada Union High School.

This year's Holiday Season will be conducted by auditioning conductor Cheryl Baker. Some of you may know Cheryl from her guest conducting night she handled in the Spring, or you may be more familiar with her as a percussionist this past summer.

Either way, Cheryl's experience will be integrated with our Band as we continue to audition Conductors for our open Conductor position.

We still have yet to work out the exact date of the Holiday Concert, but, it will be filled with appropriate Holiday music and plenty of Holiday Cheer. So warm up your horns and plan to be challenged on October 29 at 6:30.

Cheryl promises it will be lots of FUN.



Nevada County Concert Band

\$\$

Finance Corner

\$\$

The Band has just come off of its best financial summer in history. Combined with the prudent spending that has been in place since the new Executive Committee has taken office in June, the Band finances are in a significantly improved state over a year ago.

Ron Swing reports that our three Summer POP concerts grossed over \$2,400 for the first time ever. Added to the paid performances at two parades and Lake Wildwood, the Band will have \$2,000 more in the coffers on January 1, 2002, than it did last year.

Ron warns, however, that with the local market for rehearsal space tightening up, we will no longer be able to find an indoor rehearsal space for free as we have in the past. The Holiday Season alone will cost the Band \$200 and an annualized figure is in the range of \$500-\$750. After our cost for conducting, it appears that rental of indoor rehearsal space will quickly jump to the second highest Band expense.

Anyone with contacts to finding indoor rehearsal space for free is encouraged to pursue the availability of the space with the building operator right away. Although our Holiday Season is committed, our Winter/Spring plans are not finalized.